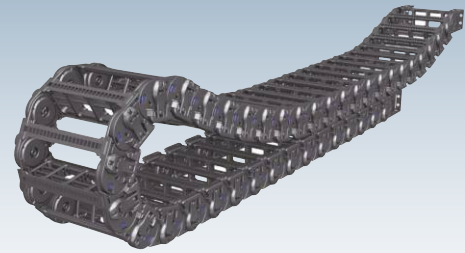




Technical Details :	
Chain Material	Glass fibre reinforced Polyamide, UL 94-HB
Noise	40 dB (DIN EN 61672-1)
Applications	Gantry Robot, Machine Center, Textile Machine, Welding Machine, Wood Work Machine and Fabric Machine having long stroke length
Coefficient of Friction	0.3 - 0.4 μ
Speed	10m / sec
Temperature Range	-30° C to +130° C Continuous
Vertical Installation Lengths	Curve above = max. 6 m Curve below = max. 100 m Side mounted, Unsupported = max. 2.5 m
Approvals	

SHIFT CABLE DRAG CHAINS - S TYPE

ST072S (SLIDING WITH SKID)



ST072S

Bending Radius R	100	120	145	200	250	300
Lp	806	917	1063	1400	1840	2280
Lf	380	420	470	580	752	924
H	230	230	230	230	230	230

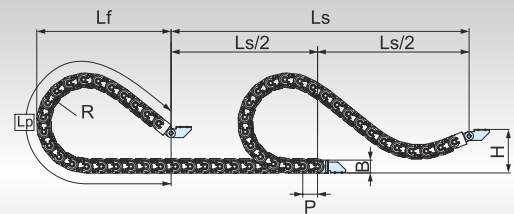
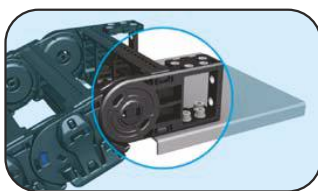
Chain Cross Section

Cat. No.	A	B	C	D	Bending Radius
ST072S.050	98	71	50	45	
ST072S.075	123	71	75	45	
ST072S.100	148	71	100	45	
ST072S.125	173	71	125	45	100,120,145,
ST072S.150	198	71	150	45	200,250,300
ST072S.175	223	71	175	45	
ST072S.200	248	71	200	45	
ST072S.250	298	71	250	45	
ST072S.300	348	71	300	45	

End Bracket (In Polyamide with Steel Washer)

Cat. No.	End Bracket Type	Suitable for Chain Size
ST-FEB072N/S	Free	ST072S

End Bracket



Ls : Stroke
Total Length $L = Ls / 2 + Lp$
Safe space $Hs \geq H + 40 \text{ mm}$

